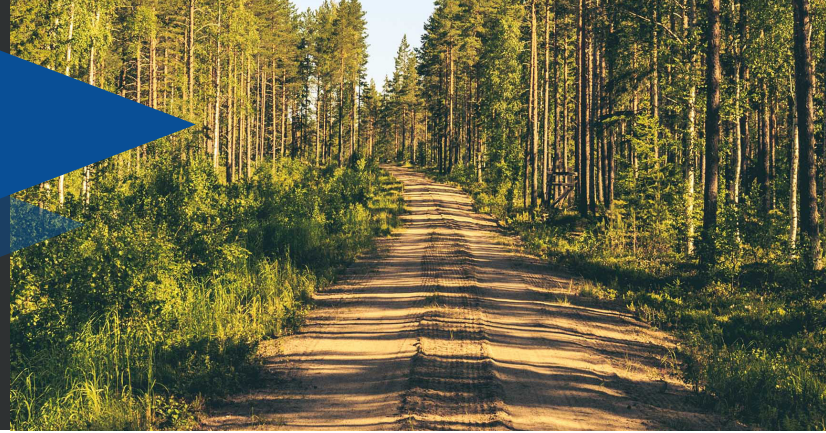


# ENCLOSED CARGO 7.5-WIDE UTV

7.5'x14' – 7.5'x18'

**POLARIS**  
TRAILERS



7.5'x14' – 7.5'x18'

## STANDARD FEATURES

- > All-Aluminum Construction, Integrated Frame Design
- > 7.5 Wide Frame Design
- > 24" Sloped V-Nose Front
- > 2"x4" Integrated Frame
- > 24" O/C Floor & Roof Studs
- > 16" O/C Wall Studs
- > Screwless .030" Bonded Sides
- > One Piece Aluminum Roof
- > 2-3K Braked Torsion Ride Axles
- > Spread Axle Design
- > 24" Stone Guard
- > 2-5/16" Coupler w/Safety Chains
- > 2000lb Center Jack w/Foot
- > 3/8" Water Resistant Interior Walls
- > 3/4" Water Resistant Decking
- > (2) Rows of Slide Track w/(4) Sliding D-Rings
- > Interior Cove Trim
- > 4" Exterior Trim
- > (2) Dome Light w/Switch
- > Exterior LED Lighting
- > Plastic Salem Vents
- > Rear Ramp w/Spring Assist w/Aluminum Hardware
- > 32"x78" Side Door w/Paddle Handle & Piano Hinge
- > 4-Year Limited Warranty

## STANDARD SPECIFICATIONS

Trailer Model	Cargo 7.5x14 UTV	Cargo 7.5x16 UTV	Cargo 7.5x18 UTV
Model Number	PC7.5x14UTV	PC7.5x16UTV	PC7.5x18UTV
Box (WxLxH)	88.5"x14'x87"	88.5"x16'x87"	88.5"x18'x87"
Interior (WxLxH)	85.5"x13'10"x85"	85.5"x15'10"x85"	85.5"x17'10"x85"
Overall (WxLxH)	101"x18'8"x106"	101"x20'8"x106"	101"x22'8"x106"
Deck Height	19"	19"	19"
Rear Door Opening (WxH)	82"x81"	82"x81"	82"x81"
Axle(s) - Qty/Rating	2-3500# Braked	2-3500# Braked	2-3500# Braked
Wheels	15" Aluminum Rims	15" Aluminum Rims	15" Aluminum Rims
Tires	205/75R15	205/75R15	205/75R15
GVWR	7000#	7000#	7000#
Curb Weight	1480#	1580#	TBD
Payload	5520#	5420#	TBD
Hitch Height	18"	18"	18"

## OPTIONS & ACCESSORIES

CONSTRUCTION OPTIONS
Add 6" to Box Height
Add 9" to Box Height
Upgrade Roof Studs to 16" O/C (From 24" O/C; PBF)
EXTERIOR
Two-Tone Color Package w/6" Anodized Divider
Two-Tone Color Package w/No Anodized Divider
TIRE/WHEEL ASSEMBLIES & ACCESSORIES
Spare 15" Silver Mod Wheel w/205/75R15 Tire
Interior Elevated Spare Tire Mount (Diamond Plate; Interior Wall)

TIE DOWN OPTIONS
5000# Recessed Heavy Duty D-Ring w/Backing Plate (Installed)
Airline Track (Recessed in Floor; Aluminum; PLF)
DOORS/WINDOWS/VENTS
Starter Flap for Rear Ramp
FLOORING OPTIONS
Upgrade to 16" O/C Floor Studs (From 24" O/C; PBF)
Upgrade to TPO Coin Flooring (Black; PLF)
Upgrade to 3/4" Quad-Ply Decking (Non-Skid Surface; FRP Backer; PBF)

## COLOR OPTIONS



# POPULAR ENCLOSED CARGO OPTIONS

## CONSTRUCTION OPTIONS

CONSTRUCTION OPTIONS
Flat Front Construction
Cast Polished Corners for Flat Front
Upgrade to Radius Roof Construction (Up to 30'; Not Available w/Sloped V-Nose, Cast Corners, & Rear Canopies)
2' Round Nose w/Anodized Nose Cone
Add Slope in V-Nose
3" Extra Height
6" Extra Height
9" Extra Height
12" Extra Height
15" Extra Height (Requires .080 Wall Stud Upgrade & HD Rear Ramp)
18" Extra Height (Requires HD Ramp or Barn Door Upgrade & .080 Wall Stud Upgrade)
21" Extra Height (Requires .080 Wall Stud Upgrade & HD Rear Ramp)
24" Extra Height (Requires HD Ramp or Barn Door Upgrade & .080 Wall Stud Upgrade)
6" Height Decrease
12" Height Decrease
Additional Length in 2' Intervals (6' Wide)
Additional Length in 2' Intervals (7' Wide)
Additional Length in 2' Intervals (7.5' Wide)
Additional Length in 2' Intervals (8.5' Wide)
Upgrade Trailer Sub Frame to 2"x8" (From 2"x6"; PBF; Cargo Models Going to 12K GVWR Axles+)
Add Beavertail w/Extra High Door (6' & Wider; 16' & Longer)
Reverse Beavertail Construction (6' & Wider)
12" Extended Tongue (For 3K Tandem Axle Enclosed w/2"x5" Frame; Includes Center Beam Upgrade)
16" Extended Tongue (For 5K Tandem Axle Enclosed; Trailer Must Have 2"x6" Frame or Larger)

## DOORS, RAMPS & COMPARTMENTS

DOORS, RAMPS & COMPARTMENTS
26"x58" Side Access Door w/Paddle Handle & Piano Hinge
32"x58" Side Access Door w/Paddle Handle & Piano Hinge
32"x66" Side Access Door w/Paddle Handle & Piano Hinge
32"x72" Side Access Door w/Paddle Handle & Piano Hinge
32"x72" Radius RV Door w/Screen (Window Optional)
Upgrade to 32"x72" Side Access Door w/Paddle Handle & Piano Hinge (From 66")
Upgrade to Dexter 32"x72" Radius Door (From 32"x72" Piano Hinged Door)
Upgrade to 32"x72" Radius RV Door w/Screen & Optional Window (From Standard 32"x72" Side Access Door)
Upgrade to 36" Wide Side Access Door (From 32")
Upgrade to 48" Wide Side Access Door (From 32")
48"x72" Split Side Access Door(s)
Upgrade to 48"x72" Split Side Access Door(s) (From 32"x72" Side Access Door)
Upgrade to 78" Height Side Access Door (From 72"; Excludes Radius RV Door)

CONSTRUCTION OPTIONS (CONTINUED)
Upgrade to Triple Tube Tongue (Enclosed Cargo)
Upgrade to 2-5/16" A-Frame Coupler (From 2" A-Frame Coupler)
Upgrade to 3" Adjustable 2-5/16" A-Frame Coupler
Upgrade to 8000# Pedestal Jack (From Wheel or Center Jack)
Upgrade to 10000# Pedestal Jack (From Wheel or Center Jack)
Upgrade to 5000# Center-Mount Wheel Jack (From 1500# Wheel Jack or 2000# Center Jack)
Upgrade to 16" O/C Floor Crossmembers
Upgrade to 12" O/C Floor Studs (From 16" O/C; PBF)
Upgrade Wall Studs to 2"x2" (PBF)
Upgrade to .080 Wall Studs
Upgrade Ceiling Studs to 2"x2" (PBF)
Walk-On Roof (Reinforced; PBF)
Heavy Duty Winch Mount (Winch Not Included)
8' Platform Roof w/Ladder & Rail Kit
10' Catwalk (Includes Ladder to Roof & 3 Ladder Racks)
12' Catwalk (Includes Ladder to Roof & 3 Ladder Racks)
14' Catwalk (Includes Ladder to Roof & 4 Ladder Racks)
16' Catwalk (Includes Ladder to Roof & 4 Ladder Racks)
18' Catwalk (Includes Ladder to Roof & 5 Ladder Racks)
20' Catwalk (Includes Ladder to Roof & 6 Ladder Racks)
Ladder to Roof (Outside V-Nose)
Upgrade to Roller on Rear Ladder Rack
Ladder Racks
Rear Canopy Loading Light System (2013 Version; Not Available w/Radius Roof)
Rear Canopy Loading Light System (2020 Version; Not Available w/Radius Roof)

DOORS, RAMPS & COMPARTMENTS (CONTINUED)
Upgrade to Rear Ramp Door w/Spring Assist & Starter Flap (From Barn Door)
Upgrade to Car-Hauler Grade Rear Ramp (From Standard Ramp)
Diamond Plate Transition Flap (Ramp to Box)
Aluminum Starter Flap to Rear Ramp
Barn Doors on Side of Trailer (74"W x 72"H)
Ramp Door w/Spring Assist on Side of Trailer (74"W x 72"H)
Generator Door (30"x30") w/Salem Vent & Paddle Handle (Lockable)
Generator Door (36"x36") w/Salem Vent & Paddle Handle (Lockable)
Generator Compartment (30"Hx30"Wx24"D; Door Optional)
Generator Compartment (36"Hx36"Wx24"D; Door Optional)
Slide-Out Generator Tray
Upgrade to Insulated Generator Compartment (Requires Generator Compartment)
Propane Compartment (30"H x 30"W x 24") w/Vented Non-Locking Door
Propane Compartment (36"H x 36"W x 24") w/Vented Non-Locking Door

## DOORS, RAMPS & COMPARTMENTS CONTINUED

DOORS, RAMPS & COMPARTMENTS
14"x14" Fuel Door w/Paddle Handle
24"x24" Fuel Door w/Paddle Handle
4'x4' Concession Door
4'x6' Concession Door
4'x8' Concession Door
4'x4' Escape Door (Driver's Side Over Wheel Well)
30"x30" Hatch Door
RV-Style Pull-Out Step (Steel)
Aluminum Fold-Down Step
Powder Coated Aluminum Flip-Down Step
Aluminum Pull-Out Step
Aluminum Loop Step (Stationary)
Rear Full Width Step Across Rear of Trailer (12" Deep w/Expanded Aluminum on Top; Barn Doors Only)

DOORS, RAMPS & COMPARTMENTS (CONTINUED)
Aluminum Grab Handle For Side Access Door
Keyed Locking Hasps for Rear Ramp
Upgrade to L-Latches (Freezer Latches) Per Ramp; Replaces Locking Bars (Premium Models w/CH Grade Rear Ramp Only)
Locking Bar for Side Access Door
Keyed Locking Hasps for Side Door Locking Bar
Upgrade to Full Piano Hinge For Rear Ramp
Upgrade to Full Piano Hinge For Side Access Door
Rear Door Air Curtain
Pull-Down Screen for Rear Door Opening
Pop-Out Tent Bed (60"H x 80"L Rough Opening)
Keyless Entry System (For Side Access Door)
Rear Stowable Ramp Kit: (2) 26"x6' Ramps; Extrusion to Hook Ramps (Stow Inside Barn Doors); (4) Extra Strap Hinges

## EXTERIOR OPTIONS

EXTERIOR OPTIONS
.040 Skin Upgrade (Black, White, & Silver Only)
.050 Skin Upgrade (Black & White Only)
.078 PolyCOR Exterior Skin (Available in Black, White & Charcoal)
Anodized Aluminum Side & Rear Trim Panel (12"; PBF)
Aluminum Diamond Plate Side & Rear Trim Panel (12"; PBF)
Anodized Aluminum Side & Rear Trim Panel (24"; PBF)
Aluminum Diamond Plate Side & Rear Trim Panel (24"; PBF)
Upgrade to Larger 7" Bottom Trim (PBF)
Upgrade to 36" Stone Guard (From 24")

EXTERIOR OPTIONS (CONTINUED)
Upgrade to 48" Stone Guard (From 24")
Two-Tone Color Package w/No Anodized Divider
Two-Tone Color w/6" Anodized Divider
Two-Tone Color w/12" Anodized Divider
Two-Tone Color w/24" Anodized Divider
Upgrade to Anodized Nose Cone
Add Red & White DOT Tape to Trailer (PLF; Required on Any Trailer Over 10,000lb GVWR)
Upgrade to Translucent Roofing (From Mill-Finish Aluminum; PBF)

## INTERIOR OPTIONS

INTERIOR OPTIONS
White .030 Aluminum Side Walls (Bonded)
White .030 Aluminum Side Walls (Screwed)
White .030 Aluminum Ceiling (Bonded)
White .030 Aluminum Ceiling (Screwed)
White Vinyl Backed Luan (Ceiling Only; PBF)
Upgrade to 3/8" Plywood Walls (From 3/8" Water Resistant; May Extend Lead Time)
Upgrade to White Vinyl Faced Luan Walls (From 3/8" Water Resistant)
Upgrade to White Vinyl Backed 3/8" Plywood (From 3/8" Water Resistant; PBF)
Upgrade to 3/8" Water Resistant Walls (From White Luan Walls; PBF)
Upgrade to 3/8" Plywood Walls (From White Luan Walls; PBF)
Upgrade to 1/2" Plywood Walls (PBF)
3/4" Foam Insulation (Side Walls; PBF)
3/4" Foam Insulation (Ceiling; Liner Required)
2" Foam Insulation (Ceiling Only; PBF)

INTERIOR OPTIONS (CONTINUED)
.030 Aluminum Cove (All Colors)
Anodized Roof Covers
Anodized Spring Cover
Diamond Plate Spring Cover
.030" Aluminum Spring Assist Cover for 4/5-Wide Rear Ramp Door
.030" Aluminum Spring Assist Cover for Rear Ramp Door
Partition Wall w/32" Access Door
Diamond Plate Kick Plate (6")
Diamond Plate Kick Plate (12")
Diamond Plate Kick Plate (24")
Water Resistant Kick Plate (12")
Extruded Aluminum Kick Plate (6")
Carpet on Walls (Charcoal Only; 3' Up Walls; 4' For V-Nose)
Upgrade to Black TPO Coin Walls (3' Up Walls; 4' For V-Nose; PLF)

## FLOORING OPTIONS

FLOORING OPTIONS
14"x14" Fuel Door w/Paddle Handle
24"x24" Fuel Door w/Paddle Handle
4'x4' Concession Door
4'x6' Concession Door
4'x8' Concession Door
4'x4' Escape Door (Driver's Side Over Wheel Well)
30"x30" Hatch Door
RV-Style Pull-Out Step (Steel)

## TIRE/WHEEL ASSEMBLIES & ACCESSORIES

TIRE/WHEEL ASSEMBLIES & ACCESSORIES
Upgrade to 13" Aluminum (Radial; From 13" Silver Mod Wheels)
Upgrade to 15" Silver Mod (Radial; From 13" Silver Mod Wheels; Includes Fender Upgrade)
Upgrade to 15" 225 Silver Mod Wheels (Radial; From 15" 205 Silver Mod Radial)
Upgrade to 15" Aluminum (Radial; From 15" Silver Mod Radial Wheels)
Upgrade to 15" Black Aluminum (Radial; From 15" Silver Mod Radial Wheels)
Upgrade to 15" Flat Black Mod (Radial; From 15" Silver Mod Radial Wheels; Special Order)
Upgrade to 15" Galvanized (Radial; From 15" Silver Mod Radial Wheels)
Upgrade to 15" 225 Aluminum Wheels (Radial; From 15" 225 Silver Mod Radial)
Upgrade to 15" 225 Black Aluminum Wheels (Radial; From 15" 225 Silver Mod Radial)
Upgrade to 15" 225 Flat Black Mod (Radial; From 15" 225 Silver Mod Radial Wheels; Special Order)
Upgrade to 16" Silver Mod Wheels (Radial; From 15" 225 Silver Mod Radial)
Upgrade to 16" Aluminum Wheels (Radial; From 15" 225 Aluminum)
Upgrade to 16" Black Aluminum Wheels (Radial; From 15" 225 Aluminum)
Upgrade to 16" G-Rated Silver Mod Wheels (Radial; From 16" Silver Mod Radial)
Upgrade to 16" Aluminum Wheels (Radial; From 16" Silver Mod Wheels)
Upgrade to 16" Black Aluminum Wheels (Radial; From 16" Silver Mod Wheels)
Upgrade to Black Aluminum Rims from Aluminum (Same Size)
Spare 13" Silver Mod Wheel w/ 175/80R13 Tire

## AXLES

AXLES
Upgrade to 1-3K Torsion Braked Axle (From 1-3K Torsion Idler; Trailer Must Have at Least 12" E-Rated Tires)
Upgrade to 2-3K Torsion Braked Axles (From 1-3K Torsion Idler)
Upgrade to 2-5K Torsion Braked Axles & Frame (From 2-3K Braked; Includes Axle Carrier Upgrade, 16" O/C Floor Stud Upgrade & Upgrade to 15" 225 6-Lug Tires)
Upgrade to 2-6K Torsion Braked Axles (From 2-5K Torsion Braked; Includes 16" Tire Upgrade; 2x8 Frame Upgrade Required)
Upgrade to 2-7K Torsion Braked Axles (From 2-5K Braked; Includes 16" Tire Upgrade; 2x8 Frame Upgrade Required)

FLOORING OPTIONS (CONTINUED)
Painted Epoxy Floor Covering (PBF)
Upgrade to Rubber Coin Flooring (Black; PLF)
Upgrade to TPO Coin Flooring (Black)
Upgrade to Extruded Aluminum Floor From Rubber TPO Floor (Charge For Ramp & V-Nose; Starter Flap Included if Added; PLF)
Upgrade to Charcoal Carpet Flooring (PLF)
Upgrade to 3/4" Foam Insulated Floor
Aluminum Diamond Plate Runner (12" Single Row; .056"; PLF)
Aluminum Diamond Plate Runner (12" Double Rows; .056"; PLF)

TIRE/WHEEL ASSEMBLIES & ACCESSORIES (CONTINUED)
Spare 13" Aluminum Wheel w/ 175/80R13 Tire
Spare 13" Galvanized Wheel w/ 175/80R13 Tire
Spare 15" Silver Mod Wheel w/ 205/75R15 Tire
Spare 15" Aluminum Wheel w/ 205/75R15 Tire
Spare 15" Black Aluminum Wheel w/ 205/75R15 Tire
Spare 15" Galvanized Wheel w/ 205/75R15 Tire
Spare 15" Silver Mod Wheel w/ 225/75R15 Tire (5-Lug)
Spare 15" Silver Mod Wheel w/ 225/75R15 Tire (6-Lug)
Spare 15" Aluminum Wheel w/ 225/75R15 Tire (5-Lug)
Spare 15" Aluminum Wheel w/ 225/75R15 Tire (6-Lug)
Spare 15" Black Aluminum Wheel w/ 225/75R15 Tire
Spare 16" Silver Mod Wheel w/ 235/80R16 Tire
Spare 16" Aluminum Wheel w/ 235/80R16 Tire
Spare 16" Black Aluminum Wheel w/ 235/80R16 Tire
Spare 16" G-Rated Silver Mod Wheel w/ 235/80R16 Tire (14 Ply Rating)
2024 Interior Elevated Spare Tire Mount (Universal Fitment)
Exterior Elevated Spare Tire Mount (Diamond Plate; Exterior Wall)
Spare Tire Mount (Interior; Floor Level)
Deluxe Recessed Spare Tire Well (Diamond Plate w/Hatch Cover)

AXELS (CONTINUED)
Upgrade to 2-3K Hydraulic Braked Axles (From 2-3K Torsion Braked)
Spread Axle Upgrade w/Individual Fenders (7' & 7.5' Wide)
Spread Axle Upgrade w/Tapered Fender Skirting (8' Wide)
Upgrade to Surge Brakes (From Compatible Brake Size)
Upgrade to Zero Degree Axle(s)
Upgrade to 22.5 Degree Down Axle(s)
Upgrade to 45 Degree Down Axle(s)
Upgrade to Galvanized Axle (Torsion; Minimum 4 Week Lead Time)



## TIE-DOWNS

TIE-DOWNS
Light Duty Surface-Mounted D-Ring (Installed)
Light Duty Sliding D-Ring (For Recessed Slide Track; Installed)
Upgrade to Powder Coated Sliding D-Ring (From Existing Sliding D-Ring)
Heavy-Duty Recessed 5000# D-Rings w/Backing Plate
Heavy-Duty Recessed 6000# Swivel D-Rings w/Backing Plate (Zinc)
Heavy-Duty Recessed 6000# Swivel D-Rings w/Backing Plate (Stainless Steel)
Recessed Flip-Up Motorcycle Wheel Chock w/(4) Surface-Mounted D-Rings
Recessed Flip-Up Motorcycle Wheel Chock w/(4) Recessed Heavy Duty D-Rings
Recessed Flip-Up Motorcycle Wheel Chock
Tandem Flip-Up Motorcycle Wheel Chocks w/(8) Surface-Mounted D-Rings
Tandem Flip-Up Motorcycle Wheel Chocks w/(8) Heavy Duty D-Rings
Single Stainless Steel Tube Style Wheel Chock for Single Piece of Slide Track (Installed)
Stainless Steel Tube Style Wheel Chock

## 12V LIGHTING & ELECTRICAL

12V LIGHTING & ELECTRICAL
Add LED Backup Lights (Pair; Installed)
Additional LED Stop/Turn/Tail Lights (Pair; Installed)
Upgrade to 12" LED Slimline Tail/Turn/Stop Lights (Pair)
Upgrade to Additional LED Marker Lights Bullets
Diamond Plate Rear Loading Lights (Mounted Over Rear Ramp Spring; Installed)
Anodized Rear Loading Lights (Mounted Over Rear Ramp Spring; Installed)
(2) 12V LED Load Lights (Double Lights w/Single Switch; 950 Lumens)
12V LED Load Light (Single Light w/Switch; 950 Lumens)
Recessed LED Exterior Load Light Package (For Side of Trailer): (1) Light w/Switch & Housing; 950 Lumens
12V LED Porch Light w/Wall Switch
K60 LED Exterior Scene Light Package: (1) 12V Wall Switch w/(2) K60 Scene Lights
Mid-Ship Turn Signals (For Tandem Fenders Only; Pair)
Angled Back Up Lights (Mounts on Side of Trailer)
Upgrade to 12V Electric Pedestal Jack w/Battery & Box Installed
Upgrade to 12V Electric Pedestal Jack w/o Battery
12V Power Jack (Cigarette Lighter Plug)
Upgrade to LED Economy Dome Light 460 Lumens (From Incandescent Dome Light)
Additional 12V LED Dome Light (460 Lumens)
12 Volt Wall Switch
12 Volt Wall Switch (3-Way)

TIE-DOWNS (CONTINUED)
E-Track, Surface Mounted (Floor)
E-Track, Surface Mounted (Wall)
E-Track, HD Recessed w/Backing Plate (Floor)
E-Track, HD Recessed w/Backing Plate (Walls)
E-Track (Aluminum), Surface Mounted (Wall)
E-Track (Aluminum), HD Recessed w/Backing Plate (Floor)
E-Track (Aluminum), HD Recessed w/Backing Plate (Walls)
Airline Track (Aluminum), Surface Mounted (Floor)
Airline Track (Aluminum), Surface Mounted (Wall)
Airline Track (Recessed in Floor; Aluminum, PLF)
Airline Track (Recessed in Wall; Aluminum, PLF)
Recessed Slide Track (Track Only; D-Rings Sold Separately)
Recessed Slide Track: (2) Rows w/(4) Sliding D-Rings
Powder Coated Slide Track Upgrade (For Existing Track; PBF)

12V LIGHTING & ELECTRICAL (CONTINUED)
Upgrade to 12 Volt (3-Way) Wall Switch
LED Puck Light Package: (8) Recessed Lights & Wall Switch (Requires Ceiling Liner)
Additional Recessed LED Puck Light
LED Puck Light Package Under Overhead Cabinet: (2) Round LED Flush Mount Dome Lights; (1) 12V Wall Switch
18" 12V LED Light (Requires Ceiling Liner)
Upgrade Interior Dome Light to 12V 18" LED Light
Upgrade to (3) 18" 12V LED Lights From (2) 4' LED Wraparound (Requires Ceiling)
Trickle Charger for Battery
Deep Cycle Marine Battery & Box (Wired)
12V USB-C & USB-A Dual Recessed Receptacle
LED Interior Strip Light w/Housing Package (Per Foot, Per Section)
Upgrade to 7-Way Plug w/Junction Box (From 4-Way Plug)
Upgrade to Permaseal Wire Connectors
Upgrade Premium Light Package (LED Strip Lights w/Integrated Backup Lights, Marker Lights w/Clear Lenses)
Upgrade to Premium Light Package (LED Strip Lights w/No Backup Lights, Marker Lights w/Clear Lenses)
Wireless Backup Camera System w/7" LCD Screen
Add LED 6" Oval Alternating Flashing Safety Lights (Pair; Orange) w/Exterior Toggle Switch (Hardwired Into Auxiliary; 7-Way Plug Required)

## 110V LIGHTING & ELECTRICAL

110V LIGHTING & ELECTRICAL
110V Power Package #1: (1) 15 AMP Motorbase Plug, (1) Wall Switch, (1) Receptacle, (1) 4' LED Wraparound Light (No Additions Available Pkg #1)
110V Power Package #2: 30 AMP Breaker, (1) 25' Shore Line, (2) 3-Way Wall Switches, (1) Standard Wall Receptacle, (1) GFCI Wall Receptacle, (2) 4' LED Wraparound Lights
110V Power Package #3: (1) 30 AMP Panel, (1) Wall Switch, (4) Standard Wall Receptacles, (1) GFCI Receptacle, (4) 4' LED Wraparound Lights, (1) Brace & Wire Stub for A/C Unit
110V Power Package #4: (1) 15 AMP Motorbase Plug, (2) Wall Receptacles
110V Power Package #5: (1) 60A Breaker Panel w/60A Converter & 50A Motorbase Plug, (2) 3-Way Wall Switches, (1) Standard Wall Receptacle, (1) USB Wall Receptacle, (1) GFCI Wall Receptacle, (2) 4' LED Wraparound Lights, 12V Deep Cycle Battery & Box
15A Motorbase Plug
30A Motorbase Plug (Replaces Shore Line; 110V Pkg Required)
30A Power Converter (110V Pkg #2 Required)
30A Power Cord 25' Long (For Motorbase Plug)
30A Generator Line Switch

## CABINETS

CABINETS
V-Nose Base Cabinet, 2-Door (50" & 60" Wide Models)
V-Nose Base Cabinet, 2-Door (80" Wide Models)
V-Nose Base Cabinet, 4-Door (80" Wide Models)
V-Nose Base Cabinet 2-Door (84" Wide Models; 78"W x 22"D x 37"H)
V-Nose Base Cabinet 4-Door (84" Wide Models; 74"W x 31"D x 37"H)
V-Nose Base Cabinet, 2-Door (90" Wide Models)
V-Nose Base Cabinet, 2 Door (99" Wide Models; 83"W x 30"D x 37"H)
V-Nose Base Cabinet, 4 Door (99" Wide Models; 83"W x 30"D x 37"H)
Upgrade V-Nose Base Cabinet to Full Width/Depth of V-Nose (72", 80" & 84" Wide Models)
Upgrade V-Nose Base Cabinet to Full Width/Depth of V-Nose (90" & 99" Wide Models)
V-Nose Overhead Cabinet, 2-Door (50" & 60" Wide Models)
V-Nose Overhead Cabinet, 2-Door (80" Wide Models)
V-Nose Overhead Cabinet, 2-Door (84" Wide Models)
V-Nose Overhead Cabinet, 2-Door (90" Wide Models)
V-Nose Overhead Cabinet, 2-Door (99" Wide Models; 56"W x 19"D x 19"H)
V-Nose Overhead Cabinet, 2-Door (99" Wide Models; 72"W x 19"D x 19"H; Special Option Cabinet)
4' Straight Wall Base Cabinet, 2-Door (48"W x 24"D x 37"H)
5' Straight Wall Base Cabinet, 2-Door (60"W x 24"D x 37"H)
6' Straight Wall Base Cabinet, 2-Door (72"W x 24"D x 37"H)
8' Straight Wall Base Cabinet, 2-Door (96"W x 24"D x 37"H)
8' Straight Wall Base Cabinet, 4-Door
Upgrade Base Cabinet to 28" L-Shape Extension
8' Flat Front 4-Door Base Cabinet
Add 4" Depth to 8' Flat Front 4-Door Base Cabinet (24" Deep)

110V LIGHTING & ELECTRICAL (CONTINUED)
Upgrade to 50 AMP Breaker Box (110V Pkg #2 Required)
50A Power Cord 25' Long (For Motorbase Plug)
60A Power Converter (110V Pkg Required)
110 Volt Wall Receptacle (Installed; 110V Pkg Required)
110 Volt Combo USB/Wall Outlet Receptacle (Installed; 110V Pkg #2 Required)
110 Volt Wall Switch (3-Way; 110V Pkg #2 Required)
Exterior GFCI Wall Receptacle (Requires 30A Package)
4' LED Wraparound Light (110V Pkg Required)
Interior GFCI Wall Receptacle (Requires 30A Package)
500W Swing-Mount Quartz Light
13,500 BTU Roof Mounted Air Conditioner (110V Pkg #2 Required)
Heat Strip for A/C Unit
Brace & Stub Wire for Future AC Installation (110V Pkg #2 Required; 12 Gauge Wire & 20A Breaker)
Heater; Electric: CADET Com-Pak Plus White Wall Fan, 1500 Watt (110V Pkg #2 Required)

CABINETS (CONTINUED)
Overhead Cabinet, 1 Flip-Up Door (48"W x 13"D x 18"H)
Overhead Cabinet, 2-Door (48"W x 13"D x 18"H)
Premium Overhead Cabinet, 1 Flip-Up Door (48"W x 13"D x 18"H)
Overhead Cabinet, 1 Door (62"W x 12"D x 18"H)
Deluxe Overhead Cabinet, 4-Door (72"W x 13"D x 18"H)
Deluxe Overhead Cabinet, 4-Door (96"W x 13"D x 18"H)
Overhead Cabinet 2 Flip-Up Door (96"W x 13"D x 18"H)
8' Flat Front 4-Door Overhead Cabinet
Add 8" Depth to 8' Flat Front 4-Door Overhead Cabinet (24" Deep)
Upgrade V-Nose Overhead Cabinet to Full Width/Depth of V-Nose (72", 80" & 84" Wide Models)
Wheel Well Cabinet 2 Door w/Shelving (72"W x 6 3/4"D x 62"H)
Premium 50" Helmet Cabinet w/Hooks
24" Wardrobe Cabinet w/(1) Full-Height Door, (1) Shelf, (1) Clothing Rod (24"W x 24"D x 72"H)
96" Premium Overhead Split Cabinet w/Center Shelf & 2 Flip-Up Doors (96"W x 18"D x 18"H)
36" Wardrobe Cabinet w/(1) Full-Height Door, (1) Shelf, (1) Clothing Rod (36"W x 24"D x 76"H)
Premium Wall-Mounted Coat Hanger (47.5", 10 Hooks)
Premium Ceiling-Mounted Coat Hanger (38", 22 Hooks)
Clothing Rod for Overhead Cabinets (48" Cabinets only)
4' Coat Rack Package: 47' Slide Track w/(6) Adjustable Hooks
18" Shelving w/Angled Gussets (PLF; Per Tier)
Upgrade to Formica Countertop (Base Cabinet Sold Separately)
Standard Tool Crib Package: (1) 72x24 Horizontal Access Door (Over Fender, w/Retainer Chains); (2) 38x22 Vertical Access Doors (Ahead/Behind Fender); Adjustable Shelf Brackets in Vertical Cabinets; 3/8" Water Resistant Liner (Interior & Exterior of Box Frame); 19"D x 42"H x 128"L Box Frame Inside Trailer, Hinged Lid (3 Sections)

# POPULAR ENCLOSED CARGO OPTIONS CONTINUED

## VENTS & WINDOWS

VENTS & WINDOWS
14"x14" Manual Roof Vent
12V Power Roof Vent
110V Power Roof Vent (Requires 30A Package)
Fantastic Fan/Vent (Dometic 22-0462; Requires 30A Package)
Maxx-Air Roof Vent Cover
Directional Salem Vent Kit (Plastic; Pair)

VENTS & WINDOWS (CONTINUED)
Two-Way Directional Salem Vent Kit (Aluminum; Pair)
18"x24" Horizontal Radius Sliding Window w/Screen
18"x24" Vertical Radius Sliding Window w/Screen
24"x36" Radius Sliding Window w/Screen
24"x36" Egress Sliding Window (Tinted w/Screen)

## MISC OPTIONS, ACCESSORIES

MISC OPTIONS, ACCESSORIES
Fold-Down Sofa/Sleeper
Fold-Down Bunk Beds
HappiJac Bed System w/(1) Queen Size Mattress
Fold Down Bench (12"x48"; Work or Seating)
Fold-Down Padded Bench (48"L; Vertical Design)
Premium 50" Fold-Up Padded Bench
Premium 36" Fold-Up Work Bench w/Integrated Tool Storage
Premium Cup Holder

MISC OPTIONS, ACCESSORIES (CONTINUED)
Premium (2) Race Fuel Holder
Premium (3) Race Fuel Holder
Basic Stereo Package: Includes (4) Boss Speakers
Stabilizer Jacks
Bogey/Caster Wheels (Installed; Pair)
Scissor Jacks (Camper Style; Pair)
Upgrade to Wheel on 2000# Center Jack

## SPECIAL PACKAGES

SPECIAL PACKAGES
NEW Polaris Versatile Wall Track System (PLF/Per Row)
Exterior Powder Coat Package (Cargo/Car Haulers): Includes Inner & Exterior Door Trims, Fenders, Stone Guard, Locking Bars, Hinges, Grab Handles, Coupler & Exterior Trim

RAMP TYPE	APPLICABLE MODELS	CAPACITY
Utility Trailer Rear Ramp (Fold-Down)	SSR (All Sizes); AR 2.0 (All Sizes); WR 2.0 (All Sizes); FA 2.0 (All Sizes); Landscape (LS) 2.0 (All Sizes)	750#
Utility Trailer Rear Ramp (Fold-Down, Bi-Fold)	SSR (Optional, All Sizes); AR 2.0 (Optional, All Sizes); WR 2.0 (Optional, All Sizes); FA 2.0 (Optional, All Sizes); Landscape (LS) 2.0 (Optional, All Sizes)	750#
Deckover Equipment Trailer Ramps (Stow)	(All Sizes)	4000# (Pair)
Deckover Equipment Trailer Ramps 14K (Fold-Down)	(All Sizes)	5000# (Pair)
Patriot Ramps (Fold-Down)	(All Sizes)	4000# (Pair)
Patriot Ramps 14K (Fold-Down)	(All Sizes)	5000# (Pair)
Dump Trailers (Side-Stow, Optional)	(All Sizes)	4000# (Pair)
ATV (83-Wide, Side-Stow)	(All Sizes)	1200# (Pair)
ATV (88-Wide, Side-Stow)	(All Sizes)	750# (Pair)
Open Motorcycle (Rear-Stow)	(All Sizes)	1200#
Slingshot Rear Ramp (Fold-Down, Bi-Fold)	PU-SLINGSHOT	1500#
Open Car Hauler 2.0 (Stow)	(All Sizes)	4000# (Pair)
Open Car Hauler 2.0-10K (Stow)	(All Sizes)	4000# (Pair)
Open Car Hauler Standard (Stow)	(All Sizes)	4000# (Pair)
Open Snow (Rear-Stow)	PFS	750#
Sport Deck (Rear-Stow, Telescoping)	PSD	1000#
Enclosed Cargo (4, 5, 6-Wide)	(All Sizes)	1500#
Enclosed Cargo (7, 7.5-Wide)	(All Sizes)	1500#
Enclosed Cargo (8.5-Wide, Premium)	(All Sizes)	1500#
Enclosed Motorcycle (7-Wide)	(All Sizes)	1500#
Enclosed Car Hauler (8.5-Wide)	(All Sizes)	4000#
Enclosed Gooseneck (8.5-Wide, Rear)	(All Sizes)	4000#
Enclosed Gooseneck (8.5-Wide, Side, Optional)	(All Sizes)	1200#
Enclosed Snowmobile (7, 7.5, 101-Wide, Rear)	(All Sizes)	1500#
Enclosed Snowmobile (7, 7.5, 101-Wide, Front)	(All Sizes)	1200#
Enclosed Snowmobile (Crossover, Rear)	(All Sizes)	1500#