

COLT LS LITE

GOOSENECK SLANT LOAD SERIES



15'

STANDARD FEATURES

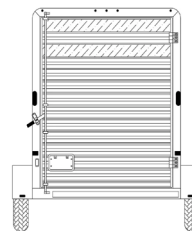
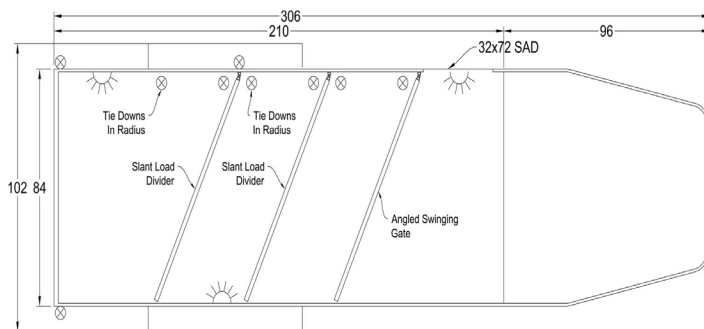
- > 15' Floor, 80" Wide, 7'0" Tall, 40-1/2" Stall Width
- > Gooseneck, w/ 92" Attic
- > Improved All Box Tube Aluminum Chassis
- > One Piece, .040 Aluminum Roof w/ Heavy Duty Radius Roof Extrusion
- > 2"x8" Pressure Treated Decking; 16" O/C I-Beam Crossmembers
- > Tandem 5.2K Braked, Dexter Torsion Ride Axles
- > Silver Mods., 225/75R15 - 6 Lug Wheels
- > Heavy Duty Rear Step-Up Rubber Bumper
- > Removable Jail Bar head & Shoulder Dividers w/ New SlamLatch System
- > .040 Pre-Painted Exterior Side Sheets GN and Tack Walls/Door, Livestock Style Sides
- > 1/2" Rubber Mats

- > Heavy Duty Wall Liner and Rear Door Liner in Horse Area
- > Full Swing Rear Gate w/ (2) Air Gaps and Plexi-Track
- > (2) Inside & (1) Outside Tie-Ring, Per Horse
- > Exterior LED Light
- > (1) LED Dome Light in Horse Area w/ Toggle Switch
- > (1) Double Action Pop-up Vent Per-Stall
- > 32"x72" Tack Storage Door w/ Sliding Window
- > Tack Room Features - Permanent Tack Wall, 36" Short-Wall, 1/2" RubberMats, LED Dome Light, (2) 18"x24" Windows
- > (2) Air Gaps w/ Plexi Track for Optional Plexi Glass - Rump and Rear Gate; Safety Chains Across Rear Opening
- > 5-Year Limited Warranty

ADDITIONAL OPTIONS

- > Additional 1' of Length in Horse Area
- > Additional Interior Tie Rings (Cast Aluminum)
- > Upgrade to 15" 225 Aluminum (Radial; From 15" 225 Silver Mod Radial)
- > Add 6" to Box Height (Livestock Models) (PBF)
- > Double Rear Doors for Stock Models
- > Ramp Over Double Doors or Rear Gate
- > Plexiglass for Air Gaps (PLF, Per Foot)
- > Per Side, Livestock and Colt Models)
- > Full Stud Divider (Instead of Standard Divider)
- > Upgrade to Extruded Aluminum Decking (From 2" PT Decking Boards, FrontierLite Models) (PBF)
- > Rubber Flooring (Instead of Extruded Aluminum & Rubber Mats) - Horse Models (PLF)
- > 4" Thick Wall Pad Package for Slant
- > Loads - Includes Pads for Walls & Dividers
- > Carpeted Attic Floor and Drop Wall (Set)
- > Carpeted Floor in Tack Area (Set)
- > Carpeted Slant Wall on Tack Side (Full Height)
- > Blanket Bar (Fold Down Style)
- > Adjustable Row of Bridle Hooks (6)
- > Brush Tray
- > Saddle Rack - Stack of Three Removable w/ Fully Adjustable Heights & Removable
- > Upgrade to Swing Out Saddle Rack (Mounted in Tack Room)
- > 6' Open Hay Rack w/ Ladder
- > Spare 15" Silver Mod Wheel w/ 225/75R15 Wheel
- > Floor-Level Spare Tire Mount
- > Running Boards (per foot per side)
- > Additional Exterior Tie Rings (Cast Aluminum)
- > Fold Down Aluminum Step (Frontier)

SCHEMATICS



COLOR OPTIONS



17'6"

STANDARD FEATURES

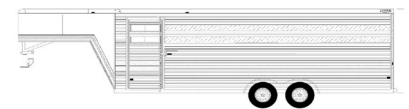
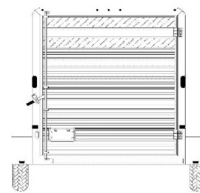
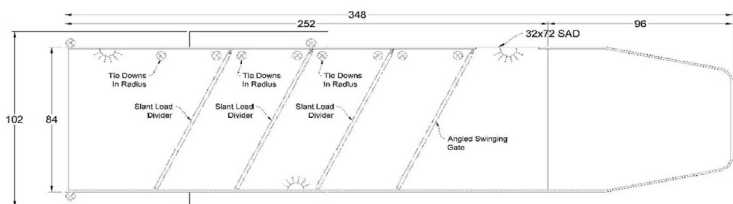
- > 17'6" Floor, 7'0" Wide, 7'0" Tall, 40-1/2" Stall Width
- > Gooseneck, w/ 92" Attic
- > Improved All Box Tube Aluminum Chassis
- > One Piece, .040 Aluminum Roof w/ Heavy Duty Radius Roof Extrusion
- > 2"x8" Pressure Treated Decking; 16" O/C I-Beam Crossmembers
- > Exterior LED Light
- > Tandem 5.2K Braked, Leaf Spring Axles
- > Silver Mods., 225/75R15 - 6 Lug Wheels
- > Heavy Duty Rear Step-Up Rubber Bumper
- > Removable Jail Bar head and Shoulder Dividers w/ New Slam Latch System
- > .040 Pre-Painted Exterior Side Sheets GN and Tack Walls/Door, Livestock Style Sides
- > (2) Air Gaps w/ Plexi Track for Optional Plexi Glass - Rump and Rear Gate
- > 1/2" Rubber Mats
- > Heavy Duty Wall Liner and Rear Door Liner in Horse Area
- > Full Swing Rear Gate w/ (2) Air Gaps and Plexi-Track
- > (2) Inside & (1) Outside Tie-Ring, Per Horse
- > Safety Chains Across Rear Opening
- > (1) LED Dome Light in Horse Area w/

- Toggle Switch
- > (1) Double Action Pop-up Vent Per-Stall
- > 32"x72" Tack Storage Door w/ Sliding Window
- > Tack Room Features - Permanent Tack Wall, 36" Short-Wall, 1/2" RubberMats, LED Dome Light, (2) 18"x24" Windows
- > 5-Year Limited Warranty

ADDITIONAL OPTIONS

- > Additional 1' of Length in Horse Area
- > Additional Interior Tie Rings (Cast Aluminum)
- > Upgrade to 15" 225 Aluminum (Radial; From 15" 225 Silver Mod Radial)
- > Add 6" to Box Height (Livestock Models) (PBF)
- > Double Rear Doors for Stock Models
- > Ramp Over Double Doors or Rear Gate
- > Plexiglass for Air Gaps (PLF, Per Foot
- Per Side, Livestock and Colt Models)
- > Full Stud Divider (Instead of Standard Divider)
- > Upgrade to Extruded Aluminum Decking (From 2" PT Decking Boards, FrontierLite Models) (PBF)
- > Rubber Flooring (Instead of Extruded Aluminum & Rubber Mats) - Horse Models (PLF)
- > 4" Thick Wall Pad Package for Slant
- Loads - Includes Pads for Walls & Dividers
- > Carpeted Attic Floor and Drop Wall (Set)
- > Carpeted Floor in Tack Area (Set)
- > Carpeted Slant Wall on Tack Side (Full Height)
- > Blanket Bar (Fold Down Style)
- > Adjustable Row of Bridle Hooks (6)
- > Brush Tray
- > Saddle Rack - Stack of Three Removable w/ Fully Adjustable Heights & Removable
- > Upgrade to Swing Out Saddle Rack (Mounted in Tack Room)
- > 6' Open Hay Rack w/ Ladder
- > Spare 15" Silver Mod Wheel w/ 225/75R15 Wheel
- > Floor-Level Spare Tire Mount
- > Running Boards (per foot per side)
- > Additional Exterior Tie Rings (Cast Aluminum)
- > Fold Down Aluminum Step (Frontier)

SCHEMATICS



COLOR OPTIONS

